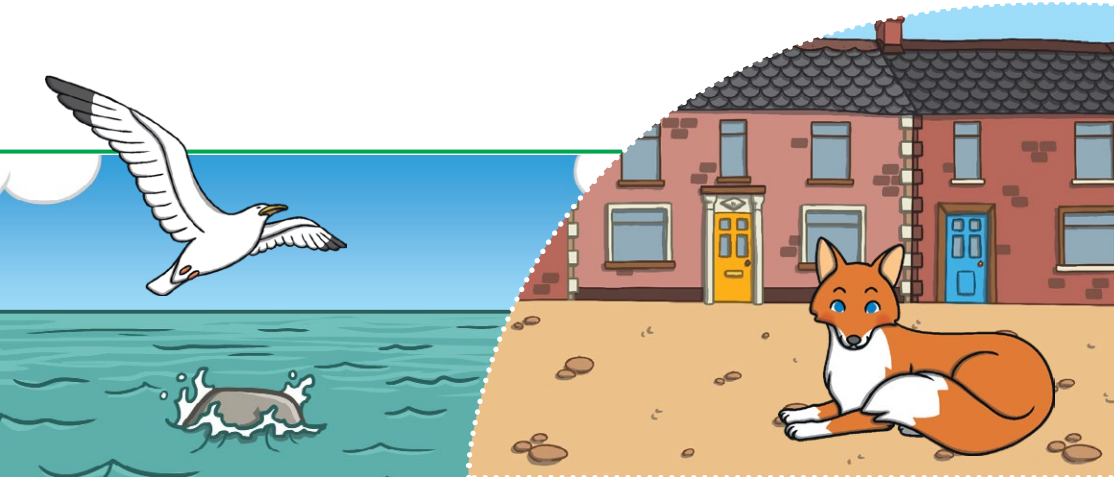


Animal Homes



- 9 A woodland habitat is the home of the mouse,
19 a bat or a squirrel or even a tiny woodlouse.
- 29 A pond is a home for ducks and water voles,
38 a beaver builds a lodge by digging some holes.
- 48 Down by the coast is home to seagulls and seals,
57 mussels, fish and crabs all make very good meals.
- 68 But the home of the fox and the pigeons we see
79 are the cities around us and the waste from our tea.



Questions



1. Where does the fox live?



2. Number the animals from 1-3 in the order they appear in the poem.

- ☐ crabs
☐ ducks
☐ seagulls



3. Find and copy one word that means 'a small wooden house'.



4. What do you think the poem means by **the waste from our tea?**

Animal Homes

- 9 A woodland habitat is the home of the mouse,
19 a bat or a squirrel or even a tiny woodlouse.
- 29 A pond is a home for ducks and water voles,
38 a beaver builds a lodge by digging some holes.
- 48 Down by the coast is home to seagulls and seals,
57 mussels, fish and crabs all make very good meals.
- 68 But the home of the fox and the pigeons we see
79 are the cities around us and the waste from our tea.

Answers



1. Where does the fox live?
The fox lives in the city.



2. Number the animals from 1-3 in the order they appear in the poem.

- 3** crabs
1 ducks
2 seagulls



3. Find and copy one word that means 'a small wooden house'.

lodge



4. What do you think the poem means by **the waste from our tea**?

Pupils' own responses, such as: The poem is talking about the leftovers we might leave on the floor or in rubbish bins that are eaten by wild animals.